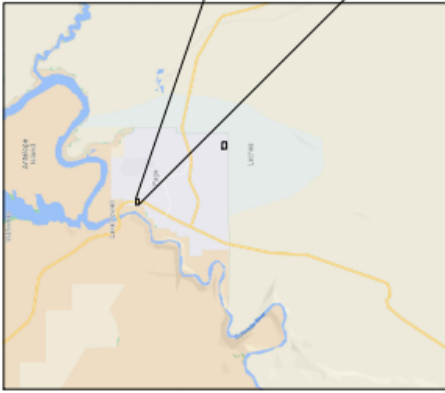


Plan Set

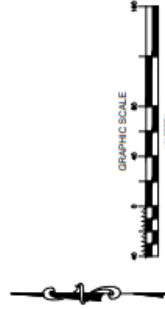
PAGE ROUNDABOUT

PROPOSED INTERSECTION OF NORTH LAKE POWELL BLVD. & US89, PAGE AZ

36°92'56", -111°47'16"



PROJECT LOCATION



INDEX SHEETS	
SHEET	DESCRIPTION
1	COVER SHEET
2	EXISTING SITE PLAN
3	PAVING AND CONSTRUCTION PLAN
4	PROPOSED STRIPING PLAN
5	CROSS SECTIONS VIEWS
6-7	PROFILE VIEWS



ANNA ENGINEERING
 1111 N. WILSON ST.
 FLAGSTAFF, AZ 86001
 TEL. (661) 957-2746 FAX. (661) 957-2746
 WWW.ANNAENGINEERING.COM

ANNA ENGINEERING
 P.O. BOX 802050
 FLAGSTAFF, AZ 86001
 TEL. (661) 957-2746 FAX. (661) 957-2746
 WWW.ANNAENGINEERING.COM

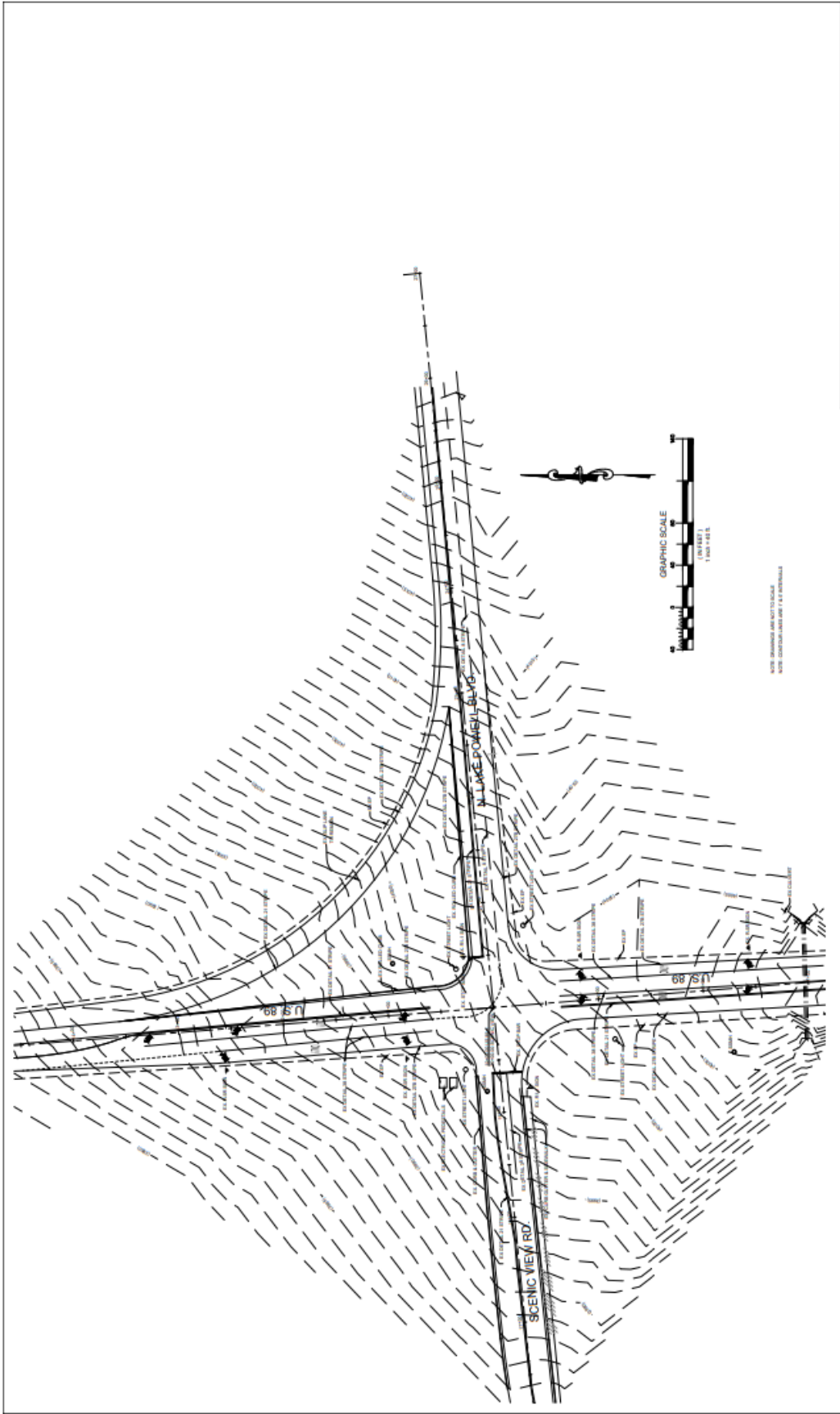
SHEET TITLE:
COVER SHEET

DRN. BY	CHK. BY	DATE	REV. NO.	REV. DATE	REVISION
		06/05/2021	1		ISSUED FOR PERMIT
		11/02/2021	2		REVISED FOR PERMIT
		12/02/2021	3		REVISED FOR PERMIT

PROJECT JOB # Page Roundabout North Lake Powell Blvd & U.S. 89 Page, AZ
 PROJECT LOCATION: PAGE ROUNDABOUT
 PROJECT: NORTH LAKE POWELL BLVD & U.S. 89
 PAGE, AZ

SHEET #
1 of 7

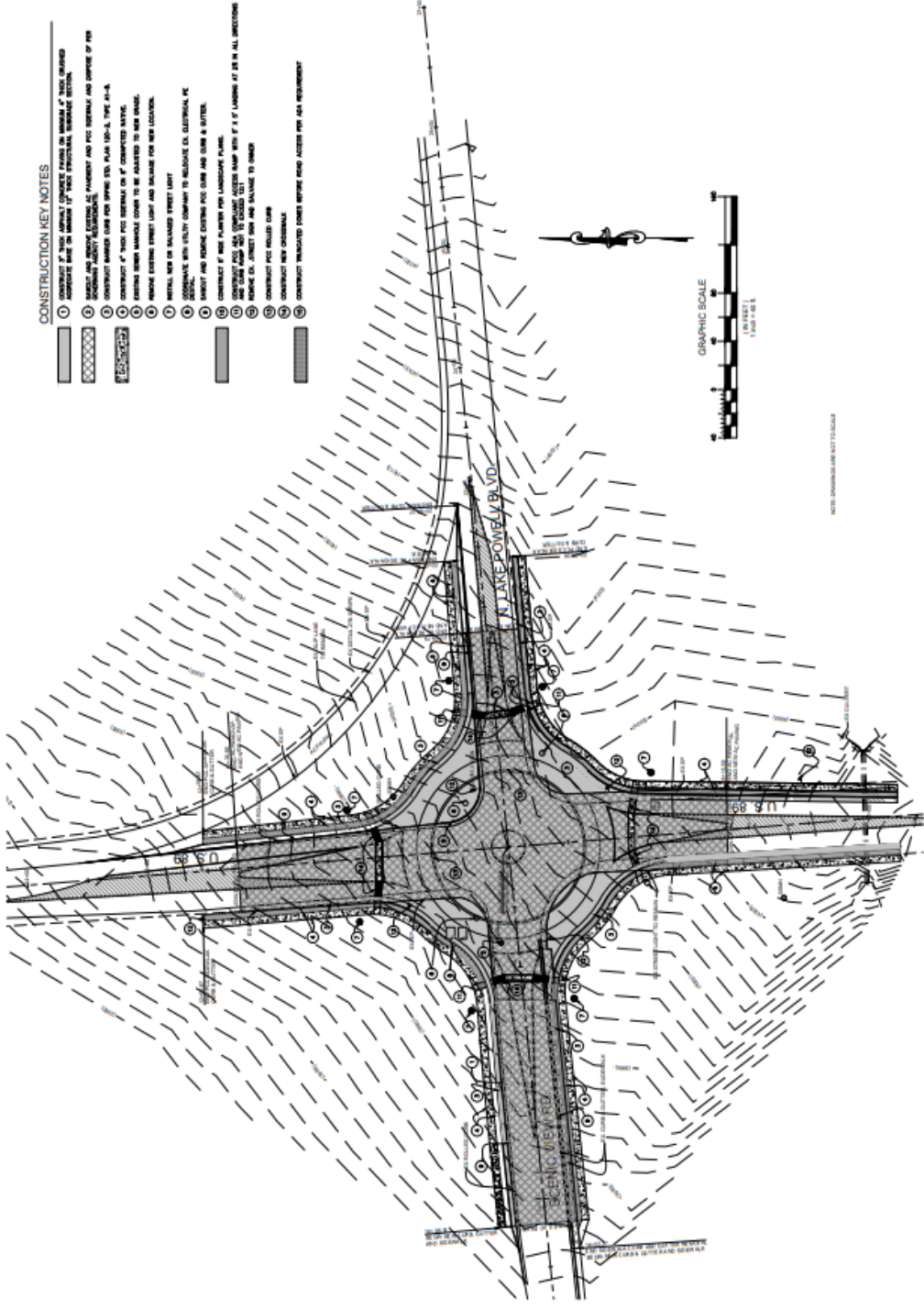
PAGE ROUNDABOUT



	www.asnaengineering.com P.O. BOX 802050 FLAGSTAFF, AZ 86001 TEL. (661)857-2746 FAX. (661)243-0093	SHEET TITLE: EXISTING SITE PLAN	DRN BY: J.L. CHK BY: D.B. DATE: 06/2021	REV. NO. 1 2 3	REV. DATE 07/05/2021 08/25/2021 09/25/2021	REVISED BY / / /	PROJECT JOB # PAGE ROUNDABOUT NORTH LAKE POWELL BLVD & U.S. 89 PAGE AZ	PROJECT LOCATION PAGE ROUNDABOUT NORTH LAKE POWELL BLVD & U.S. 89 PAGE AZ	SHEET # 2 of 7
	<p style="text-align: center;">PAGE ROUNDABOUT</p>								

CONSTRUCTION KEY NOTES

- 1 CONTRACTOR TO PLACE ASPHALT CONCRETE PAVING ON MINIMUM 4" THICK CRUSHED AGGREGATE BASE ON MINIMUM 12" THICK STRUCTURAL SUBGRADE SECTION.
- 2 MAGNOLIA AND JEWELRY EXISTING AS PAVEMENT AND PCC MATERIALS AND REMOVE IF PER CONTRACTOR MARKED CORNER PER SPINNING PLAN (SPL), THE 1/4" x 1/4" CONCRETE AT THIS PCC MATERIALS TO BE ADJUSTED TO NEW GRADE.
- 3 EXISTING CURB MARKING CORNER TO BE ADJUSTED TO NEW GRADE.
- 4 REMOVE EXISTING STREET LIGHT AND SIGNALS FOR NEW LOCATION.
- 5 RETAIN NEW OR EXISTING STREET LIGHT.
- 6 EXISTING UTILITIES TO REMAIN TO REMAIN. ALL ELECTRICAL, GAS, WATER, AND FIBER OPTIC UTILITIES TO REMAIN AND TO BE PROTECTED BY CONCRETE CURB AND GUTTER.
- 7 CONTRACTOR TO PLACE PAVING FOR LANDSCAPE PLANT.
- 8 CONTRACTOR TO PLACE ASPHALT CONCRETE PAVING WITH 4" OF LANDING AT ALL INTERSECTIONS.
- 9 REMOVE EX. STREET SIGN AND SIGNALS TO OWNER.
- 10 CONTRACTOR TO INSTALL CURB.
- 11 CONTRACTOR TO INSTALL GUTTER.
- 12 CONTRACTOR TO PROVIDE SIGNAGE PER AASHTO REQUIREMENT.



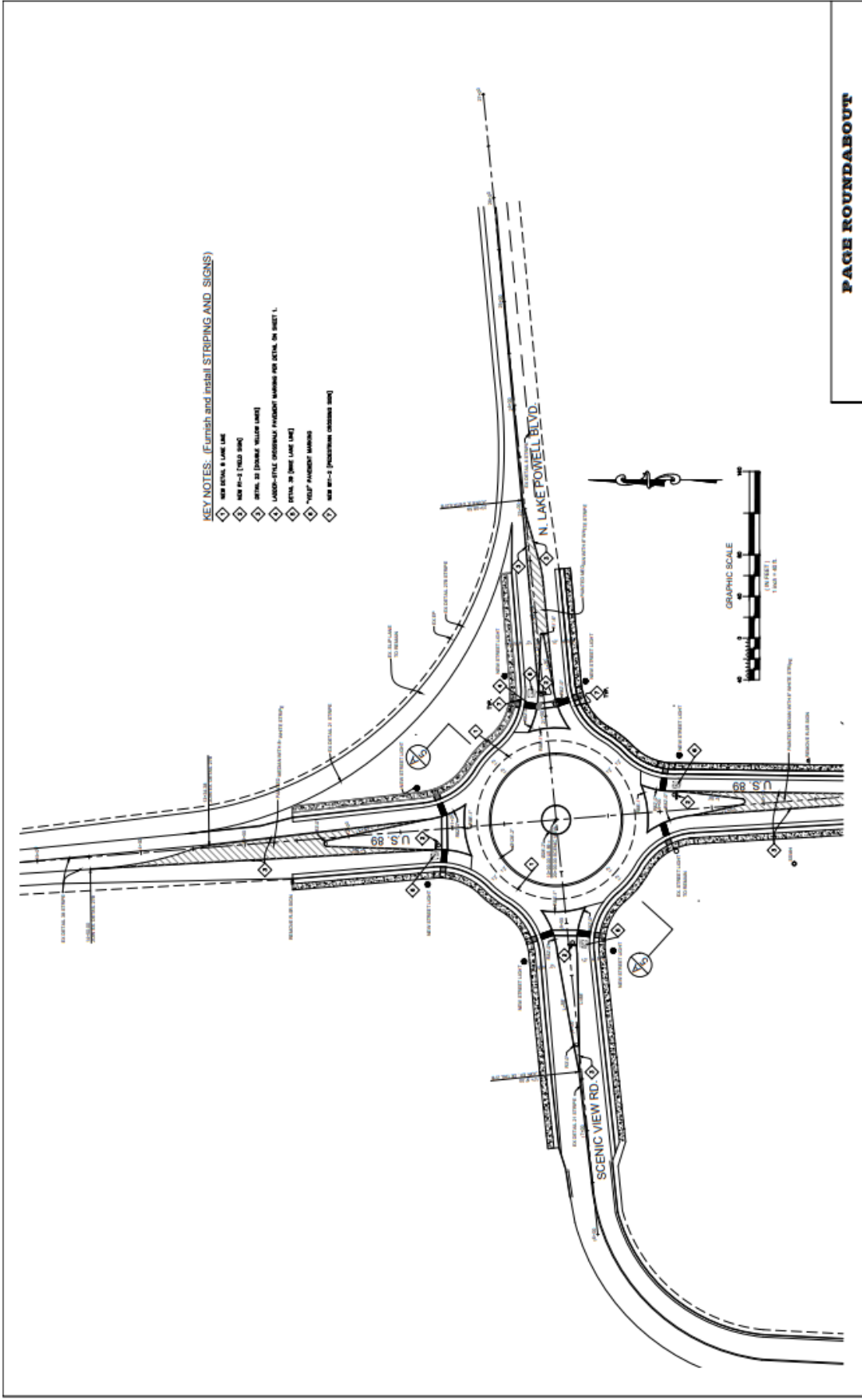
PAGE ROUNDABOUT

PROJECT JOB # Page Roundabout, North Lake Powell Blvd & U.S. 89, Page, AZ.dwg
 PROJECT LOCATION : PAGE ROUNDABOUT
 NORTH LAKE POWELL BLVD & U.S. 89
 PAGE, AZ

DRN BY/AL	CHK BY	CHK BY	REV. DATE	REV. NO.	REV. DATE
			12/27/2021	1	
				2	
				3	

SHEET TITLE: PAVING AND CONSTRUCTION
 www.arneengineering.com
 P.O. BOX 802950
 FLAGSTAFF, AZ. 86001
 TEL: (908) 763-2746 FAX: (908) 763-0083

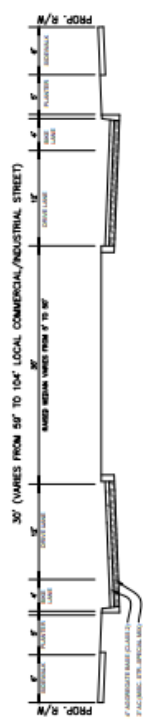
ARNE ENGINEERING
 SHEET # 3 of 7



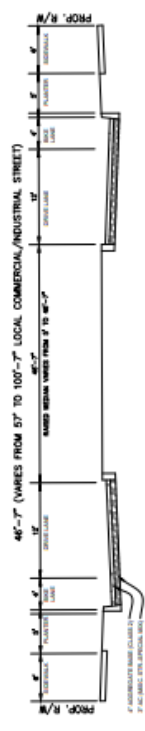
- KEY NOTES: (Furnish and install STRIPING AND SIGNS)**
- ◇ W8 SIGN-1 (SEE PLAN)
 - ◇ W8 SIGN-2 (SEE PLAN)
 - ◇ W8 SIGN-3 (SEE PLAN)
 - ◇ W8 SIGN-4 (SEE PLAN)
 - ◇ W8 SIGN-5 (SEE PLAN)
 - ◇ W8 SIGN-6 (SEE PLAN)
 - ◇ W8 SIGN-7 (SEE PLAN)
 - ◇ W8 SIGN-8 (SEE PLAN)
 - ◇ W8 SIGN-9 (SEE PLAN)
 - ◇ W8 SIGN-10 (SEE PLAN)
 - ◇ W8 SIGN-11 (SEE PLAN)
 - ◇ W8 SIGN-12 (SEE PLAN)
 - ◇ W8 SIGN-13 (SEE PLAN)
 - ◇ W8 SIGN-14 (SEE PLAN)
 - ◇ W8 SIGN-15 (SEE PLAN)
 - ◇ W8 SIGN-16 (SEE PLAN)
 - ◇ W8 SIGN-17 (SEE PLAN)
 - ◇ W8 SIGN-18 (SEE PLAN)
 - ◇ W8 SIGN-19 (SEE PLAN)
 - ◇ W8 SIGN-20 (SEE PLAN)
 - ◇ W8 SIGN-21 (SEE PLAN)
 - ◇ W8 SIGN-22 (SEE PLAN)
 - ◇ W8 SIGN-23 (SEE PLAN)
 - ◇ W8 SIGN-24 (SEE PLAN)
 - ◇ W8 SIGN-25 (SEE PLAN)
 - ◇ W8 SIGN-26 (SEE PLAN)
 - ◇ W8 SIGN-27 (SEE PLAN)
 - ◇ W8 SIGN-28 (SEE PLAN)
 - ◇ W8 SIGN-29 (SEE PLAN)
 - ◇ W8 SIGN-30 (SEE PLAN)
 - ◇ W8 SIGN-31 (SEE PLAN)
 - ◇ W8 SIGN-32 (SEE PLAN)
 - ◇ W8 SIGN-33 (SEE PLAN)
 - ◇ W8 SIGN-34 (SEE PLAN)
 - ◇ W8 SIGN-35 (SEE PLAN)
 - ◇ W8 SIGN-36 (SEE PLAN)
 - ◇ W8 SIGN-37 (SEE PLAN)
 - ◇ W8 SIGN-38 (SEE PLAN)
 - ◇ W8 SIGN-39 (SEE PLAN)
 - ◇ W8 SIGN-40 (SEE PLAN)
 - ◇ W8 SIGN-41 (SEE PLAN)
 - ◇ W8 SIGN-42 (SEE PLAN)
 - ◇ W8 SIGN-43 (SEE PLAN)
 - ◇ W8 SIGN-44 (SEE PLAN)
 - ◇ W8 SIGN-45 (SEE PLAN)
 - ◇ W8 SIGN-46 (SEE PLAN)
 - ◇ W8 SIGN-47 (SEE PLAN)
 - ◇ W8 SIGN-48 (SEE PLAN)
 - ◇ W8 SIGN-49 (SEE PLAN)
 - ◇ W8 SIGN-50 (SEE PLAN)
 - ◇ W8 SIGN-51 (SEE PLAN)
 - ◇ W8 SIGN-52 (SEE PLAN)
 - ◇ W8 SIGN-53 (SEE PLAN)
 - ◇ W8 SIGN-54 (SEE PLAN)
 - ◇ W8 SIGN-55 (SEE PLAN)
 - ◇ W8 SIGN-56 (SEE PLAN)
 - ◇ W8 SIGN-57 (SEE PLAN)
 - ◇ W8 SIGN-58 (SEE PLAN)
 - ◇ W8 SIGN-59 (SEE PLAN)
 - ◇ W8 SIGN-60 (SEE PLAN)
 - ◇ W8 SIGN-61 (SEE PLAN)
 - ◇ W8 SIGN-62 (SEE PLAN)
 - ◇ W8 SIGN-63 (SEE PLAN)
 - ◇ W8 SIGN-64 (SEE PLAN)
 - ◇ W8 SIGN-65 (SEE PLAN)
 - ◇ W8 SIGN-66 (SEE PLAN)
 - ◇ W8 SIGN-67 (SEE PLAN)
 - ◇ W8 SIGN-68 (SEE PLAN)
 - ◇ W8 SIGN-69 (SEE PLAN)
 - ◇ W8 SIGN-70 (SEE PLAN)
 - ◇ W8 SIGN-71 (SEE PLAN)
 - ◇ W8 SIGN-72 (SEE PLAN)
 - ◇ W8 SIGN-73 (SEE PLAN)
 - ◇ W8 SIGN-74 (SEE PLAN)
 - ◇ W8 SIGN-75 (SEE PLAN)
 - ◇ W8 SIGN-76 (SEE PLAN)
 - ◇ W8 SIGN-77 (SEE PLAN)
 - ◇ W8 SIGN-78 (SEE PLAN)
 - ◇ W8 SIGN-79 (SEE PLAN)
 - ◇ W8 SIGN-80 (SEE PLAN)
 - ◇ W8 SIGN-81 (SEE PLAN)
 - ◇ W8 SIGN-82 (SEE PLAN)
 - ◇ W8 SIGN-83 (SEE PLAN)
 - ◇ W8 SIGN-84 (SEE PLAN)
 - ◇ W8 SIGN-85 (SEE PLAN)
 - ◇ W8 SIGN-86 (SEE PLAN)
 - ◇ W8 SIGN-87 (SEE PLAN)
 - ◇ W8 SIGN-88 (SEE PLAN)
 - ◇ W8 SIGN-89 (SEE PLAN)
 - ◇ W8 SIGN-90 (SEE PLAN)
 - ◇ W8 SIGN-91 (SEE PLAN)
 - ◇ W8 SIGN-92 (SEE PLAN)
 - ◇ W8 SIGN-93 (SEE PLAN)
 - ◇ W8 SIGN-94 (SEE PLAN)
 - ◇ W8 SIGN-95 (SEE PLAN)
 - ◇ W8 SIGN-96 (SEE PLAN)
 - ◇ W8 SIGN-97 (SEE PLAN)
 - ◇ W8 SIGN-98 (SEE PLAN)
 - ◇ W8 SIGN-99 (SEE PLAN)
 - ◇ W8 SIGN-100 (SEE PLAN)

PAGE ROUNDABOUT

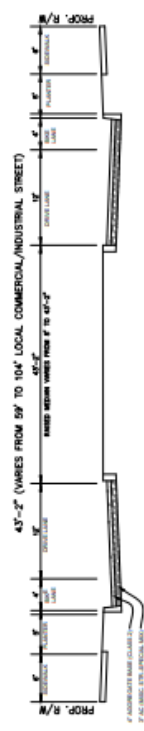
ARNA ENGINEERING	WWW.ARNAENGINEERING.COM P.O. BOX 802050 FLAGSTAFF, AZ 86001 TEL: (961)857-2746 FAX: (661)243-0093	SHEET TITLE: STRIPING & SIGNAGE PLAN				PROJECT JOB # : Page Roundabout - North Lake Powell Blvd & U.S. 89 Page AZ-009				SHEET # 4 of 7
		DIRN BY: J.L. CHK BY: Dec 06, 2021 REV. NO: 1 DATE REVISED BY:	CHK BY: A. CHK BY: NOV 05, 2021 REV. NO: 1 DATE REVISED BY:	REV. BY: REV. BY: REV. BY: REV. BY:	REV. BY: REV. BY: REV. BY: REV. BY:	REV. BY: REV. BY: REV. BY: REV. BY:	REV. BY: REV. BY: REV. BY: REV. BY:	PROJECT LOCATION : NORTH LAKE POWELL BLVD & U.S. 89 PAGE, AZ		



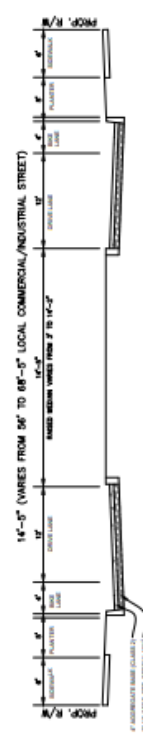
TYPICAL SECTION: S. US 89 NORTH OF INTERSECTION



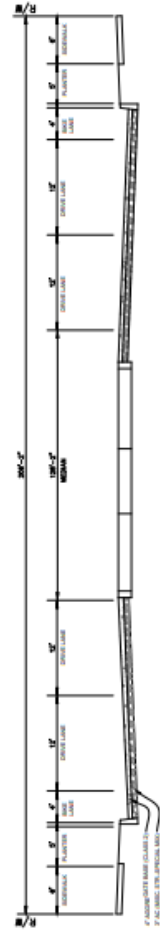
TYPICAL SECTION: N US 89 SOUTH OF INTERSECTION



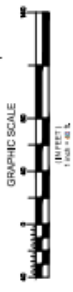
TYPICAL SECTION: SCENIC VIEW RD.



TYPICAL SECTION: NORTH LAKE POWELL BLVD.



SECTION A-5



NOTE: DIMENSIONS ARE NOT TO SCALE

www.arnae.com
 P.O. BOX 802050
 FLAGSTAFF, AZ. 86001
 TEL. (661)857-2746 FAX.
 (661)243-0083

ARNAE ENGINEERING

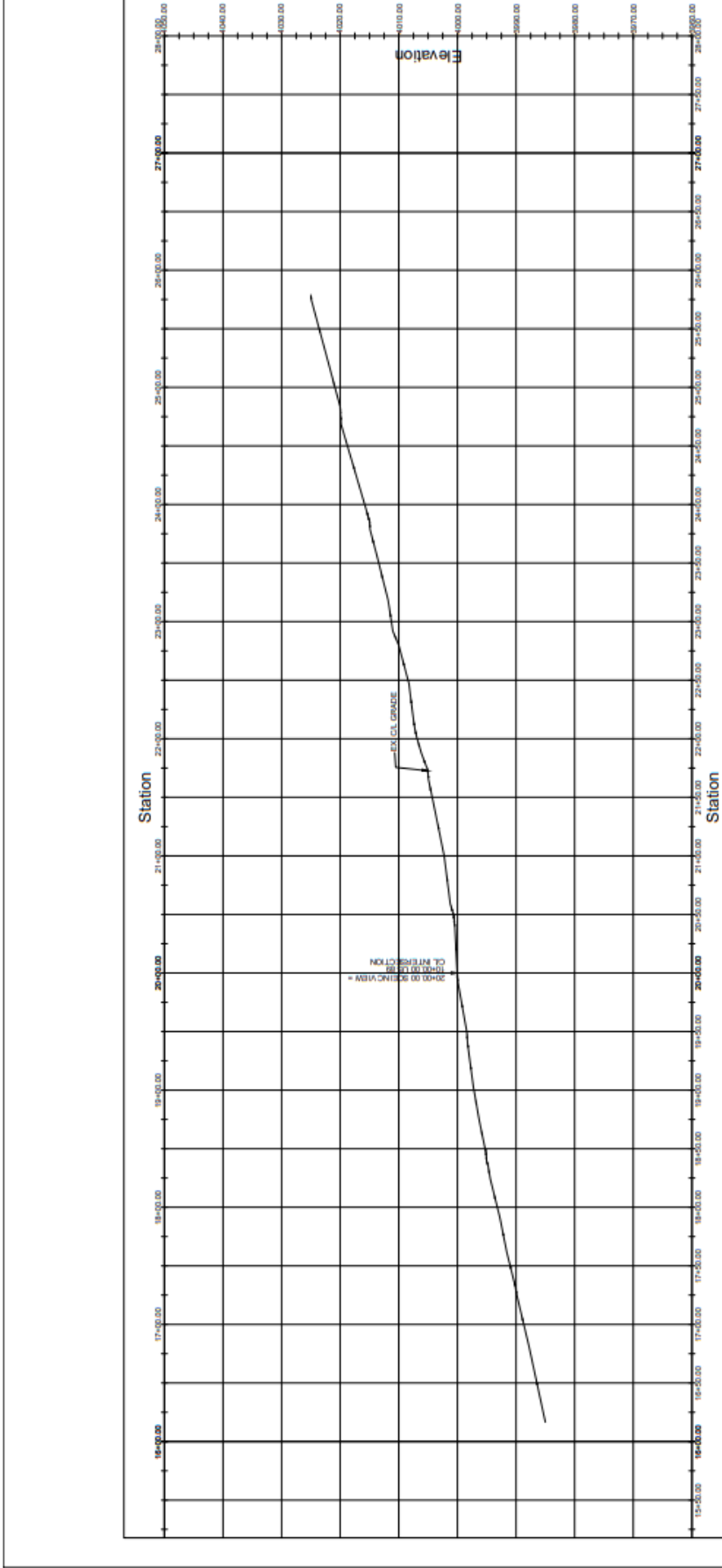
SHEET TITLE:
 CROSS SECTIONS

DRN. ENR./J. CHK. BY:	Dec 06, 2021	REV. NO.	REV. DATE	REVISED BY
CHK. BY/A. CHK. BY: <td>NOV 05 2021</td> <td>1</td> <td></td> <td></td>	NOV 05 2021	1		
REV. BY:		2		
BY:	12/02/2021 9:28:50 AM	3		

PROJECT JOB # Page Roundabout North Lake Powell Blvd & U.S. 89 Page_A2.dwg
 PROJECT LOCATION NORTH LAKE POWELL BLVD & U.S. 89
 PAGE, AZ

SHEET #
 5 of 7

PAGE ROUNDABOUT

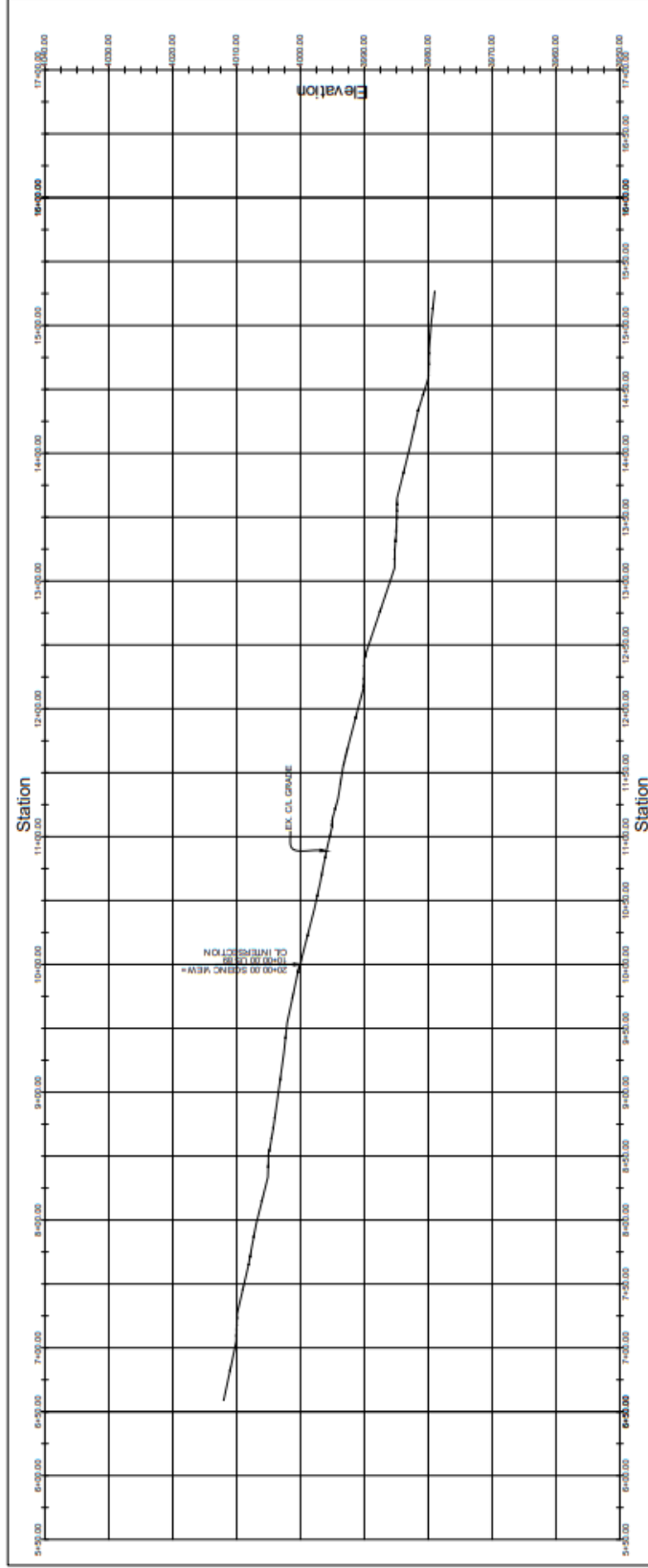


PROFILE VIEW OF NORTH LAKE POWELL BLVD & SCENIC VIEW RD.

111

PAGE ROUNDABOUT

	www.arnaeengineering.com ARNA ENGINEERING P.O. BOX 807060 FLAGSTAFF, AZ 86001 TEL. (908) 957-2746 FAX. (908) 723-0093	SHEET TITLE: PROFILE SECTION VIEW	DRN BY: J.J. CHK BY: Dec 06, 2021 CHK BY: A.A. CHK BY: Nov 05, 2021 REV BY: PLOTTED DATE: 12/02/21 10:13:02 AM	REV. NO. REV. DATE 1 2 3	REMISED BY:	PROJECT JOB # Page Roundabout North Lake Powell Blvd & U.S. 89 Page_AZ.dwg PROJECT LOCATION: PAGE ROUNDABOUT NORTH LAKE POWELL BLVD & U.S. 89 PAGE, AZ	SHEET # 6 of 7
	<p style="text-align: right;">PAGE ROUNDABOUT</p>						



PROFILE VIEW OF US89

4.13

PAGE ROUNDABOUT

PROJECT JOB # Page Roundabout, North Lake Powell Blvd & U.S. 89 Page_AZ.dwg

PROJECT LOCATION : PAGE ROUNDABOUT

NORTH LAKE POWELL BLVD & U.S. 89

PAGE, AZ

DRN BY: J.L. CHK BY: Dec 06, 2021 REV. NO. REV. DATE REVISED BY

CHK BY: A.A. CHK BY: NOV 05, 2021 1

REV. BY: PLOTTED BY: 12/6/2021 10:13:37 AM 3

SHEET TITLE:

PROFILE SECTION VIEW

www.ondrpgengineering.com
 PO BOX 827800
 FLAGSTAFF, AZ 86001
 TEL. (866)957-2746 FAX.
 (661)243-0093

ARNA
 ENGINEERING

7 of 7